

Plate Metal Benders

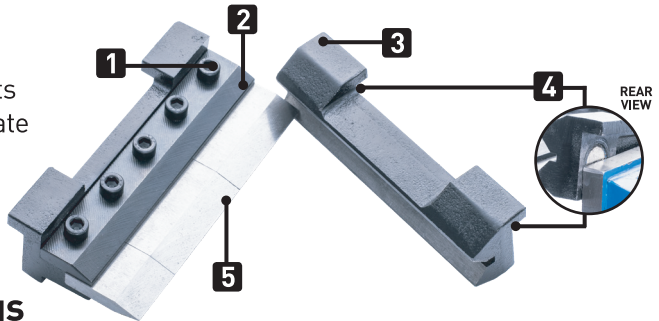
Vice Mount

4" 100mm
5" 125mm
6" 150mm

K15074 / K15075 / K15076
ED1/ July 2019

Know Your Product

1. Segmented Blade Locking Bolts
2. Segmented Blades Locking Plate
3. Vice Jaw Resting Tabs
4. Vice Mount Magnets
5. Segmented Bending Blades

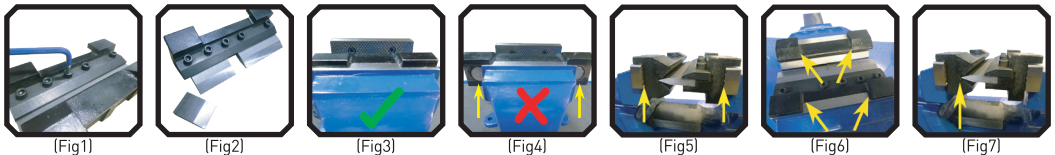


General Safety Warnings

Read and follow operating instructions and warnings and familiarize yourself with the plate metal benders. Review instructions and warnings periodically to maintain awareness. This tool is not intended for use by persons (including children) with reduced physical sensory or mental capabilities, or lack of experience and knowledge, unless they have been given supervision or instruction concerning use of the tool by a person responsible for their safety. Children should be supervised to ensure that they do not play with the tool. Always wear goggles and protective gloves when working with this tool.

The warnings, cautions and instructions discussed in this manual cannot cover all possible conditions and situations that may occur. It must be understood by the operator that common sense and cautions are factors which cannot be built into this product, but must be supplied by the operator.

Instruction Manual Images



Adjustments of the Plate Metal Bender

The Segmented Bending Blades (5) can be removed or moved to suit your bending application. If you are creating a box, you will need to adjust the blade position, to allow the box sides to clear the blades (Fig1).

1. To adjust or remove the Segmented Bending Blades (5), loosen the Segmented Blades Locking Bolts (1) with a 5mm hex key, by rotating anti-clockwise.
2. Remove or adjust the Segmented Bending Blades (5) position as required (Fig2).
3. To secure the Segmented Bending Blades (5) in your desired location, tighten (but do not overtighten) the Segmented Blade Locking Bolts (1) with a 5mm hex key, by rotating clockwise.
4. Always ensure the Segmented Bending Blades (5) are located correctly and pushed fully into the die prior to use, with the bending tip points aligned. Always check that the Segmented Blade Locking Bolts (1) are tight before use.

Assembly of the Plate Metal Bender

The Plate Metal Bender can be fitted to most vices with the following specifications

K15074 100mm – Can be fitted to most vices 100mm or larger.

K15075 125mm – Can be fitted to most vices 125mm or larger.

K15076 150mm – Can be fitted to most vices 150mm or larger.

Fitting a Plate Metal Bender to a vice size smaller in width than the actual bender width, will NOT attach correctly.

The benders Vice Jaw Resting Tabs [3], must be able to fully rest on the top of the vice jaws to function correctly. This will also ensure that the Vice Mount Magnets [4] can secure onto your vices jaw face correctly, holding them in the correct position (Fig 3 & 4).

Fitting the Plate Metal Bender to your Vice

1. Simply locate each side of the Plate Metal Bender dies onto your vice jaws.

2. Ensure the dies are located correctly, so the entire face of the die sits flat on the vice jaws face. The dies are magnetised, so the die will stay attached to the vice jaws during use (Fig5).

3. Always ensure that the Vice Jaw Resting Tabs [3] are resting on the top of your vices jaw. This will make both dies align correctly, allowing you to make accurate bends in your material (Fig6).

NOTE: If your vice jaws are NOT aligned correctly, you may need to adjust your vice jaws or shim the under the Vice Jaw resting Tabs [3] to ensure the bending dies align correctly. The Segmented Bending Blades [5], should align in the centre of the V groove of the bending die (Fig7).

Cleaning & Maintenance



WARNING! Never use solvents or other harsh chemicals for cleaning any part of the tool.

These chemicals may damage the finish of these parts.

Use only a cloth dampened with a light machine oil. Keep the tool away from moisture, as this can cause rusting of the metal machined surfaces.

Office Contact Details



Phone: +61 3 9730 7100



Email: enquiries@kincrome.com.au



Fax: +61 3 9730 7199



Website: www.kincrome.com.au

Caring for the Environment



When a tool is no longer usable it should not be disposed of with household waste, but in an environmentally friendly way. Please recycle where facilities exist. Check with your local council authority for recycling advice.



Recycling packaging reduces the need for landfill and raw materials. Reuse of recycled material decreases pollution in the environment. Please recycle packaging where facilities exist. Check with your local council authority for recycling advice.

Spare Parts

For a full list of available spare parts for this item visit the Kincrome website kincrome.com.au or alternatively contact a Kincrome Customer Service member.

Warranty



Warranty given by Kincrome Australia Pty Ltd of 3 Lakeview Drive, Caribbean Park, Scoresby, Victoria (Tel +61 3 9730 7100).

The applicable warranty period (12 months) commences on the date that the product is purchased. If this product has materials or workmanship defects (other than defects caused by abnormal or non warranted use) you can, at your cost, send the product to place of purchase, an authorised Kincrome service agent or one of Kincromes addresses for repair or replacement. Your rights under this warranty are in addition to any other rights you have under the Australian Consumer Law or other applicable laws. Our goods come with guarantees that cannot be excluded under the Australian Consumer Law. You are entitled to a replacement or refund for a major failure and compensation for any other reasonably foreseeable loss or damage. You are also entitled to have the goods repaired or replaced if the goods fail to be of acceptable quality and the failure does not amount to a major failure. For further details please visit www.kincrome.com.au or call us. Due to minor changes in design or manufacture, the product you purchase may sometimes differ from the one shown on the packaging.