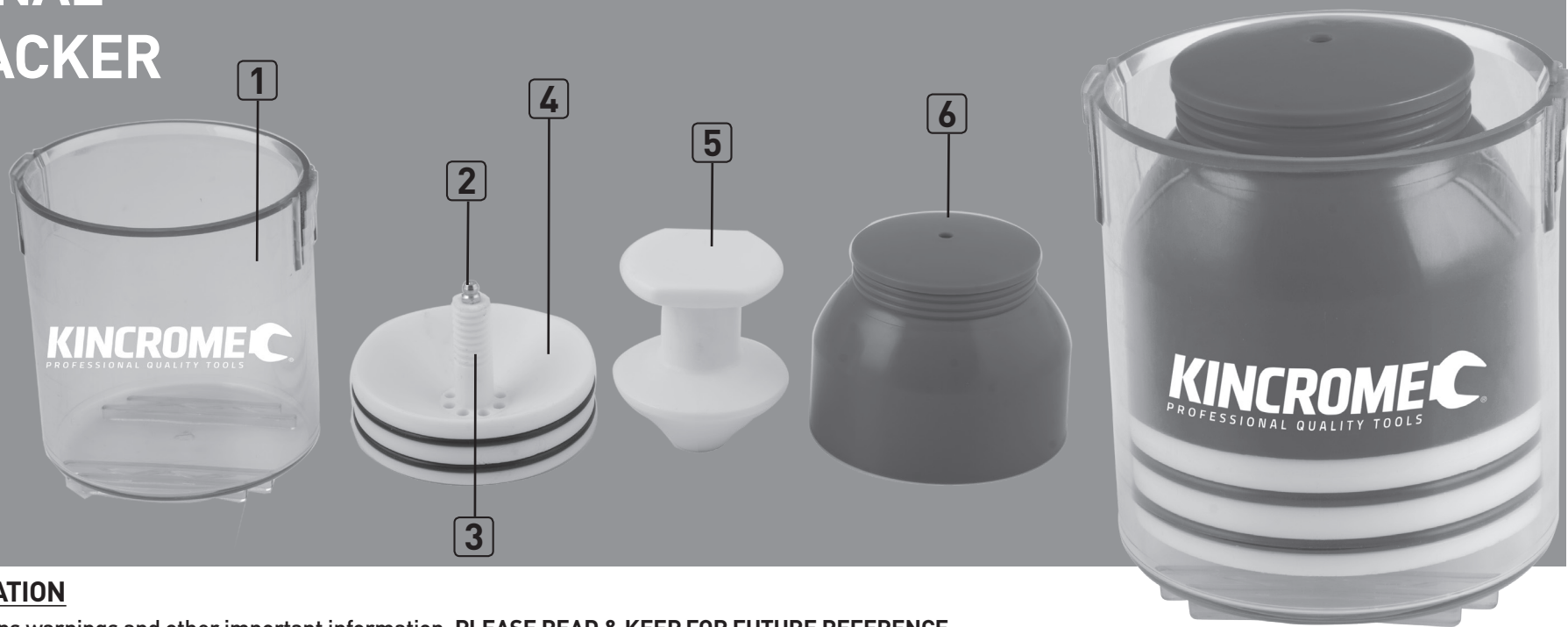


PROFESSIONAL BEARING PACKER K1705

1. Grease Cup
2. Grease Nipple
3. Bearing Retainer
Shaft
4. Bearing Retainer
5. Plunger Cone
6. Dust Cap



GENERAL SAFETY INFORMATION

1. This instruction manual contains warnings and other important information. **PLEASE READ & KEEP FOR FUTURE REFERENCE**
 2. The information in this manual has been carefully checked and is believed to be entirely reliable and consistent with the product described. However, no responsibility is assumed for inaccuracies, or liability arising out of the application and use of the equipment described.
 3. Should the equipment be used in a manner not specified, the protection provided by the equipment may be impaired and the warranty voided.
 4. Always wear safety glasses when using a grease gun. Keep work area clean & remove excess grease from tools, hands & clothing both before and after use. Do not use grease gun hose for other applications or at pressure levels above rated pressures.
- Caution:** Excess grease, if left on floors, tools or equipment can create slippery surfaces.

UNPACKING

1. Unpack all components from the box.
When unpacking the K1705 Kincrome Professional Bearing Packer, carefully inspect it for any damage that may have occurred during transit or storage. Check for any cracks, loose, missing or damaged parts before use.
2. Ensure all packaging material is disposed of as per your local council guide lines.

ASSEMBLY

The K1705 Kincrome Professional Bearing Packer comes fully assembled. Therefore no assembly is not required.

OPERATION

Filling Your Bearing Packer

There are TWO methods to filling your K1705 Kincrome Professional Bearing Packer; bulk filling and via a grease gun!

Note: Bulk filling method is much quicker, however the grease gun method is essentially mess free.

Bulk Filling

1. Remove all components from the Grease Cup (1) (Fig 1).
2. Scoop suitable grease for the job into the Grease Cup (1). For optimum performance, fill it until it is 2/3rds full (Fig 2).
3. Fit all components back into the Grease Cup (1) (Fig 3).



(Fig 1)



(Fig 2)



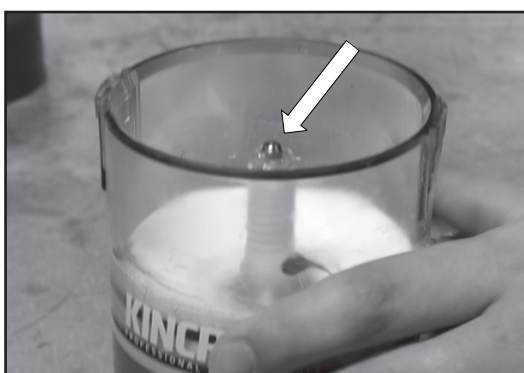
(Fig 3)

Grease Gun Filling

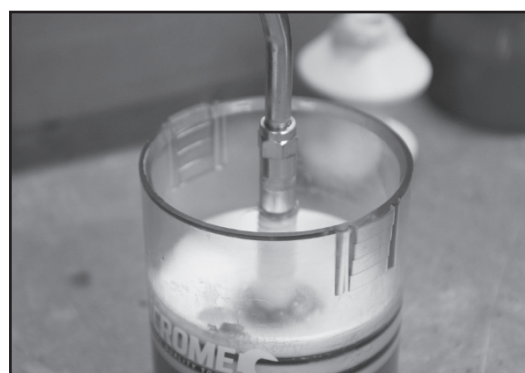
Note: The Grease Gun is ideal for topping up your grease levels within the Grease Cup (1).

You can fill your K1705 Bearing Packer via the Grease Nipple (2) located on the Bearing Retainer Shaft (3) (located beneath the Plunger Cone (5)).

1. Unscrew the Plunger Cone (5) from the Bearing Retainer Shaft (3) to reveal the Grease Nipple (2) (Fig 4).
2. Fit your Grease Gun Coupler onto the Grease Nipple (2) and fill till the Grease Cup (1) is 2/3rd's full of grease (Fig 5).
3. Fit all components back into the Grease Cup (1).



(Fig 4)



(Fig 5)

KINCROME[®]

PROFESSIONAL QUALITY TOOLS

Bearing Packer Operation

1. Fill your K1705 Bearing Packer 2/3'rds full of grease, remove the Plunger Cone (5) from the Bearing Retainer (4) by rotating the Plunger Cone (5) anti-clockwise (Fig 6).
2. Fit your bearing over the Grease Nipple (2) with the bearing sitting over the holes in the Bearing Retainer (4) (for tapered bearing ensure the tapered end is facing down (4) (Fig 7) .
3. Refit the Plunger Cone (5) to the Bearing Retainer Shaft (3) by screwing it on clockwise, until hand tight.
4. Once the bearing is securely pressed down via the Plunger Cone (5), you can begin pushing down to feed the fresh grease through your bearing (Fig 8).

Note: If you are using high temp grease, you may need to use a vice to push the extra thick grease through the bearing (refer below to "Using The Bearing Packer With A Vice").

5. Once fresh grease has been pushed through the bearing, unscrew the Plunger Cone (5) anti-clockwise and remove the bearing (Fig 9).
6. Using your hands, push additional grease in to the side of the bearings, to ensure it's fully packed and wipe away excess grease (Fig 10).
7. Follow steps 2-6 if you wish to pack additional bearings.

Note: The Kincrome K1705 can pack up to 50+ bearings before needing to be refilled.



(Fig 6)



(Fig 7)



(Fig 8)



(Fig 9)



(Fig 10)

Using The Bearing Packer With A Vice

1. Repeat steps 1-3 from the "Bearing Packer Operation" part of the manual, located above.
2. Once the bearing is secured pressed down via the Plunger Cone (5), mount the Bearing Packer into your vice and tighten the vice so it is secured (Fig 11).
3. Tighten the vice slowly, which will effortlessly push the fresh grease through your bearing, continue tightening the vice until only fresh grease oozes from the bearing (Fig 12) (do not overtighten).
4. Release the vice and remove the Bearing Packer, unscrew the Plunger Cone (5) anti-clockwise to remove the bearing (Fig 13).
5. Push additional grease in to the side of the bearings, using your hands to ensure it's fully packed and wipe away excess grease.



(Fig 11)



(Fig 12)



(Fig 13)

Maintenance & Storage

The K1705 Kincrome Bearing Packer should be stored in a cool and dry area, out of reach of children.

Always ensure that your Dust Cap (6) has been refitted before storing, this will keep dust and debris out of your Bearing Packer.

Spare Parts

No Spare parts are stocked or available for the K1705 Bearing Packer.

Australian Office Contact Details



Phone: 1300 657 528

Fax: 1300 556 005

Email: enquiries@kincrome.com.au

Website: www.kincrome.com.au

UK Office Contact Details



Mail: Kincrome UK Ltd PO Box 646 Eastleigh SO50 0NA



Email: enquiries@kincrome.com.au



Website: www.kincrome.com.au

SCAN FOR
HOW TO VIDEO



12
MONTH
WARRANTY

Warranty given by Kincrome Tools & Equipment Pty Ltd of 3 Lakeview Drive, Caribbean Park, Scoresby, Victoria, Australia (Tel +61 3 9730 7100) If this product has materials or workmanship defects (other than defects caused by abnormal or non warranted use) you can, at your cost, send the product to place of purchase, an authorised Kincrome service agent or one of Kincromes addresses for repair or replacement. Your rights under this warranty are in addition to any other rights you have under the Australian, United Kingdom & Ireland Consumer Law or other applicable laws. Our goods come with guarantees that cannot be excluded under the Australian, United Kingdom & Ireland Consumer Law. You are entitled to a replacement or refund for a major failure and compensation for any other reasonably foreseeable loss or damage. You are also entitled to have the goods repaired or replaced if the goods fail to be of acceptable quality and the failure does not amount to a major failure. For further details please visit www.kincrome.com.au or call us. Due to minor changes in design or manufacture, the product you purchase may sometimes differ from the one shown on the packaging.