

# 2 PCE HYDRAULIC VEHICLE POSITIONING JACKS

**300MM  
WHEEL  
WIDTH  
CAPACITY**

**STEEL  
FRAME  
CONSTRUCTION**

**ADJUSTING  
RANGE  
345MM-625MM**



**K12101 - 2 Piece Hydraulic Vehicle Positioning Jacks (PU Castors)**

**K12104 - 2 Piece Hydraulic Vehicle Positioning Jacks (NYLON Castors)**

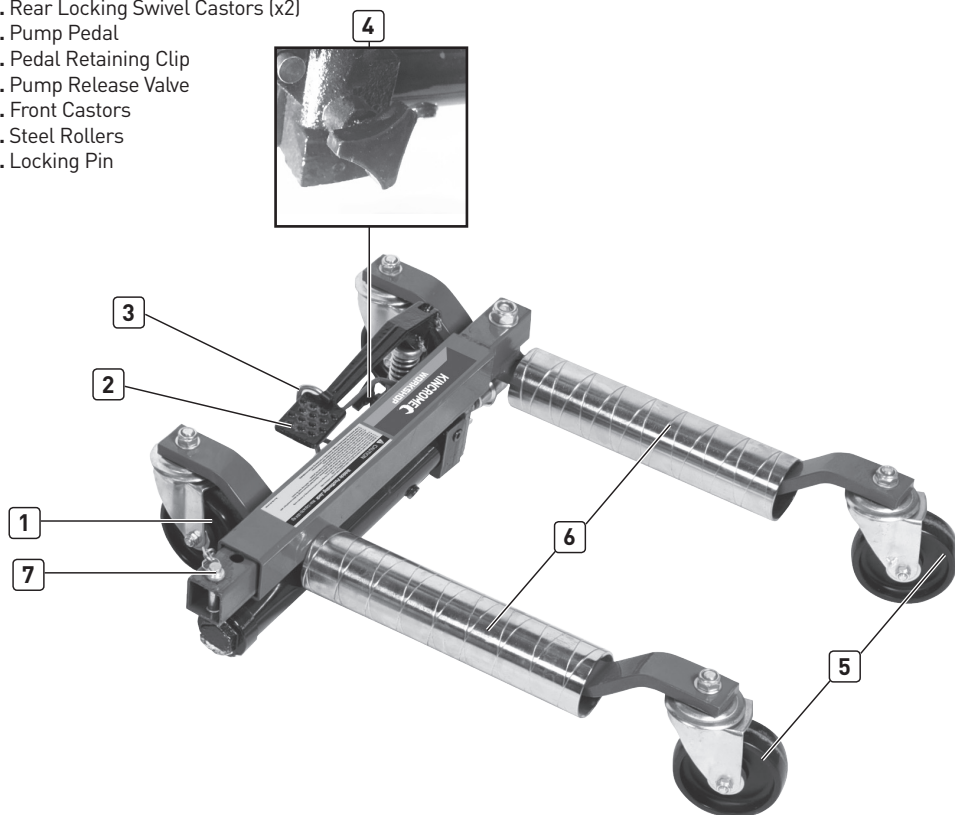
**ED1 (Feb 17)**

## Table of Contents

Know Your Product .....	2
Understanding Your Product .....	4
Assembly Instructions .....	5
Operation Instructions .....	5
Care & Maintenance .....	6
Trouble Shooting .....	7
Spare Parts & Exploded Diagram .....	8
Warranty .....	9

## Know Your Product

1. Rear Locking Swivel Castors (x2)
2. Pump Pedal
3. Pedal Retaining Clip
4. Pump Release Valve
5. Front Castors
6. Steel Rollers
7. Locking Pin



## Specifications

Model No .....	K12101 .....	K12104 .....
Rated Capacity (Each) .....	684kg .....	684kg .....
Wheel Width Capacity .....	300mm .....	300mm .....
Adjusting Range .....	345-625mm .....	345-625mm .....
Castor Material Construction .....	Polyurethane (PU) .....	Nylon .....
Weight (Pair) .....	43kg .....	43kg .....

### General Safety Warnings



Save all WARNINGS and instructions for future reference.

Read and understand the entire contents of this manual before attempting to use the Vehicle Positioning Jacks.

The WARNINGS, cautions and instructions discussed in this instruction manual cannot cover all possible conditions or situations that could occur. It must be understood by the operator that common sense and caution are factors which cannot be built into this product, but must be supplied by the operator.

### Preparing Work Area

Before using vehicle positioning jacks, it is important to prepare work area properly.

Follow this procedure each time the vehicle positioning jacks are used to help prevent property damage and or serious injury.

1. Keep work area clean, free of clutter and well lit. Cluttered and dark work places can cause accidents.
2. Keep children and bystanders away while operating this jack. Distractions can cause you to lose control, so visitors should remain at a safe distance from the work area.
3. Be aware of all power lines, electrical circuits, water pipes and other mechanical hazards in your work area, particularly those hazards below the work surface hidden from the operators view that may be unintentionally contacted and may cause personal harm or property damage.
4. Be alert of your surroundings. Using Jacks in confined work areas may put you dangerously close to cutting tools and rotating parts.

### Personal Safety

1. **Stay alert.** Watch what you are doing and use common sense when operating the tool. Do not use the tool while tired or under the influence of drugs, alcohol, or medication. A moment of inattention while operating the tool increases the risk of injury to persons.
2. **Dress properly. Do not wear loose clothing or jewellery. Contain long hair. Keep hair, clothing and gloves away from moving parts.** Loose clothes, jewellery, or long hair increases the risk of injury to persons as a result of being caught in moving parts.
3. **Do not overreach. Keep proper footing and balance at all times.** Proper footing and balance enables better control of the tool in unexpected situations.
4. **Use safety equipment.** A dust mask, non-skid safety shoes and a hard hat must be used for the applicable conditions.
5. **Always wear eye protection.** Wear ANSI-approved safety goggles.
6. **Have a qualified person maintain the equipment in good condition. Keep it clean for best and safest performance.**
7. **If the equipment needs repairing and/or there are parts that need to be replaced, have it repaired by authorized technicians. Only use the replacement parts supplied by the manufacturer.**
8. **Dress properly. Do not wear loose clothing, dangling objects or jewellery.**

### IMPORTANT SAFETY INFORMATION

1. DO NOT operate the jacks on surfaces which are not leveled. Jack must be used on hard, flat surfaces only. The vehicle may shift as soon as the jacks lift the wheel from the surface.
2. DO NOT overload the jack beyond the Maximum Load Capacity which is 680kg per unit. Refer to your vehicles manual for weight of your car.
3. DO NOT start the vehicles engine, or drive while the jacks are in use. Jacks are designed for hand maneuvering of vehicles only.
4. DO NOT use the jacks to lift tyres wider than 12" or 300mm. Refer to the side wall of your tyres. (eg. 265/40R18 tyres are 265mm wide).
5. DO NOT attempt to push the jack over obstacles. They are designed to be used on hard, smooth and flat level surfaces only.
6. After lifting, be sure to ALWAYS secure the jacks in place with the locking pin. To lower the vehicle, remove the locking pin before using the release valve.
7. Do NOT force the tool. Tools do a better and safer job when used in a manner for which they are designed. Plan your work, and use the correct tool for the job.
8. Store idle tools. When tools are not in use, store in a dry, secure place out of reach of children. Inspect tools for good working conditions prior to storage and before re-use.
9. ONLY use accessories which are recommended by the manufacturer for your model. Accessories that may be suitable for one tool may create a risk of injury when used on another tool.
10. NEVER leave the jacks unattended, while in use.

### Unpacking

When unpacking the Vehicle Positioning Jack, carefully inspect each component for damage that may have occurred during transit.

1. Check for any missing or damaged components and report these to the supplier for instructions.
2. Ensure all packaging materials are disposed of as per your local council guide lines.

### Assembly

1. There Vehicle Positioning Jacks, come fully assembled. No assembly is required!

### Bleeding / Venting Trapped Air

**Note:** Before use, the Hydraulic system of the Vehicle Positioning Jacks, may need to be purged. Some air may intrude in the hydraulic system due to movement during shipping. Air bubbles can become trapped inside the hydraulic system, preventing the jack from functioning or reducing its efficiency, thereby reducing the efficiency of the jack.

Purge air from the system if efficiency drops.

1. Once the product is assembled, open the Release Valve (4) by rotating it 1-1/2 turns, counter-clockwise (Fig 1).
2. Using the foot pedal (2), rapidly pump continuously 15-20 full strokes to purge air from the hydraulic system (Fig 2).
3. Close the Release Valve (4) clockwise until tight (DO NOT over-tighten) (Fig 3).
4. If the Vehicle Positioning Jacks, (4) does not feel like it is operating correctly, repeat the above process until all air has been purged from the system. If the problem continues contact Kincrome Customer Service.



Fig.1

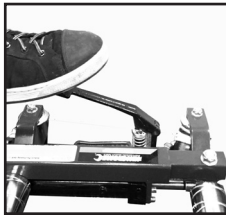


Fig.2



Fig.3

### Adding Hydraulic Fluid

#### Checking Oil Level & Adding Oil -

- a. Ensure your work area and vehicle positioning jack is clean and free of dirt and debris before checking & adding oil.
- b. Release the pressure by opening the Release Valve (4) by rotating it 1-1/2 turns, counter-clockwise (Fig 4).
- c. Remove filler screw (Fig 5) with a phillips head screw driver (not supplied) and add high quality hydraulic oil such as Kincromes' K12400 (HYDRAULIC JACK OIL 500ML) until the oil reaches the bottom of the filler screw (Fig 6).
- d. Reinstall the filler screw removed in the previous step. (Fig 5)

**Caution:** Do not let dirt get into the system, wipe the area clean around the filler plug, to prevent and dirt falling in.

- e. Bleed system - refer to "Bleeding/Venting Trapped Air" above.



Fig.4

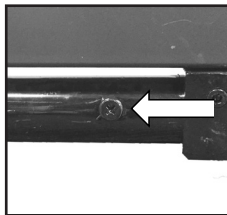


Fig.5

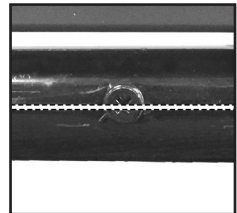


Fig.6

**OPERATION**

**WARNING!:** Only use the vehicle positioning jack on a flat & leveled surface.

Ensure your work area is clean and tidy before use of the vehicle positioning jack.

1. Position the vehicle Positioning Jack beside the vehicles wheel (Fig 7).
2. Remove the pedal retaining clip (3) (Fig 8).
3. Ensure the rear locking castors (1) are UNLOCKED in the OFF position (Fig 9).
4. Ensure the pump release valve (4) is open, by rotating 1- 1<sup>1/2</sup> turns anti-clockwise (Fig 10).
5. Spread the jack arms apart until they fit the vehicle wheel (Fig 11).

**Note:** Ensure tyres are sitting on the steel rollers (6).

6. Close the pump release valve (4) by rotating clockwise, DO NOT overtighten (Fig 12).
7. Pump the foot pedal (2) until the tyre is raised from the ground, and the locking pin hole is exposed (Fig 13).
8. Install the safety locking pin (7) and LOCK the rear castors in the ON position (Fig 14).
9. Release pressure from the ram using the pump release valve (4), as locking pin will hold the weight.

**Note:** It is not recommended that you leave the ram pressurised while not in use, as it may lead to premature failure.

10. Repeat steps 1 - 8 on the remaining wheels you wish to lift.
11. Once the vehicles wheels are raised on both sides/or all four wheels (and the rear castors (1) are not locked), the vehicle can easily be moved by pushing on the side of the vehicle to the desired position (Fig 15).
12. Once the vehicle has been located to the desired location, ensure both of the rear locking castors (1) are LOCKED (Fig 16).
13. To lower the vehicle, UNLOCK the rear locking castors (1) by putting them in the OFF position, remove the safety locking pin (7) and open the pump release valve (4) by turning anti-clockwise 1- 1<sup>1/2</sup> turns (Fig 17).
14. Grasp the grab handle, located on the right of the pump release valve (4) and slide the jacks from underneath the vehicles wheels (Fig 18).



Fig.7



Fig.8



Fig.9



Fig.10



Fig.11

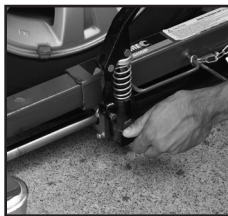


Fig.12



Fig.13



Fig.14

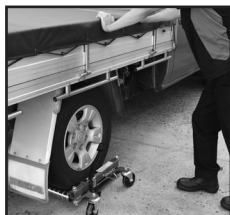


Fig.15



Fig.16



Fig.17



Fig.18

## CARE & MAINTENANCE

**Caution:** Prior to making any adjustments ensure the pressure is removed from the hydraulic system.

**Caution:** These procedures are in addition to the regular checks and maintenance explained as part of the regular operation of the hydraulically operated tool. Lubrication of this product is critical. Any contaminants such as dirt, rust, etc. may damage internal components of the hydraulic assembly.





1. BEFORE EACH USE, inspect the general condition of the tool. Check for:
  - a) loose hardware or housing.
  - b) misalignment or binding of moving parts.
  - c) cracked or broken parts.
  - d) any other condition that may affect its safe operation.
2. When not in use, store the equipment in a dry location with the vehicle positioning jacks fully retracted with the pressure released via the pump release valve (4).
3. Periodically check the unit for signs of rust or corrosion.  
Clean exposed areas with a clean oiled cloth.
4. Check and maintain the hydraulic oil level. Only use high quality Hydraulic Jack oil, such as Kincromes' K12400 HYDRAULIC JACK OIL 500ml.
5. Lubricate the hydraulic piston, linkage and foot pedal with a light machine oil.
6. Lubricate the castors and axles with bearing grease.
7. Clean all the surfaces regularly and maintain all labels and warnings on the vehicle positioning jacks.
8. Clean the castors regularly to ensure they are free from dirt etc. before use. Doing so will prevent possible damage.

## Caring For The Environment

When a tool is no longer usable it should not be disposed of with household waste, but in an environmentally friendly way.

Please recycle where facilities exist. Check with your local council authority for recycling advice.

Recycling packaging reduces the need for landfill and raw materials. Reuse of recycled material decreases pollution in the environment. Please recycle packaging where facilities exist. Check with your local council authority for recycling advice.

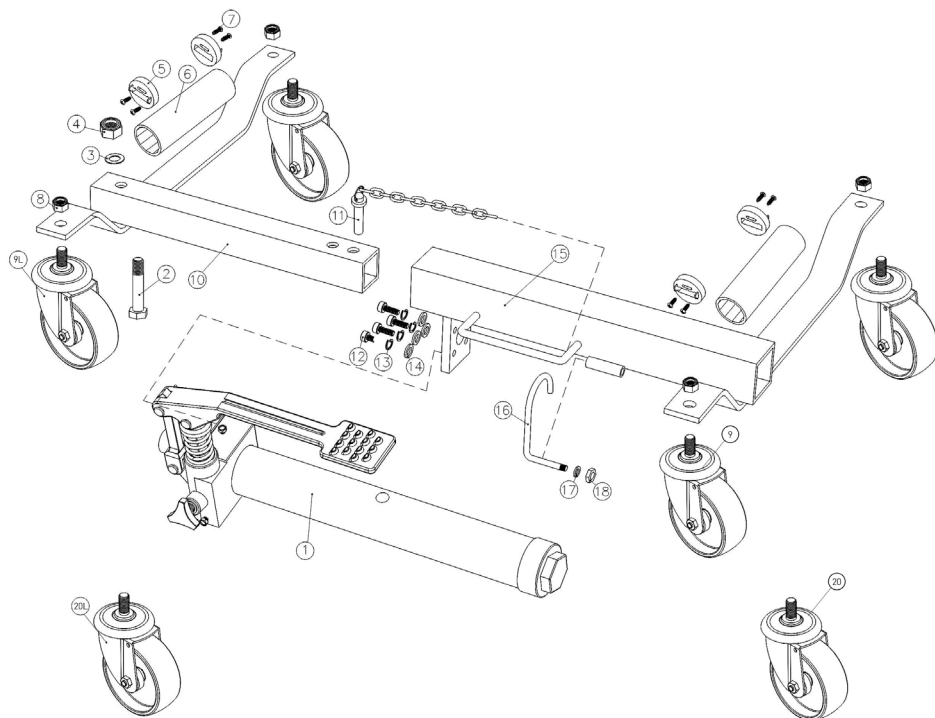
Symbol	Property or statement
kg	Weight in kilograms
	WARNING marking concerning Risk of Eye Injury. Wear ANSI-approved eye protection.
	WARNING marking concerning Risk of Hearing Loss. Wear hearing protection.
	WARNING marking concerning, Risk of Respiratory Injury. Wear NIOSH-approved dust mask/respirator.
WARNING or 	Marking concerning/Risk of Injury.

**Trouble Shooting**

Symptom	Cause	Remedy
Pump unit will not work	1. Release valve (4) is open. 2. Dirt on valve seals. 3. Worn seals.	1. Close the release valve (4). 2. Replace the oil. 3. Call Kincrome Customer Service.
Pump unit will not produce pressure	1. The reservoir could be overfilled or low on hydraulic fluid. 2. Air trapped in the system. 3. Leaking seals.	1. Check the fluid level. Do not overfill. 2. Open the release valve (4). Pump the handle a couple of full strokes. Close the release valve (4). 3. Contact Kincrome customer Service
Pump unit will retract completely	1. Air trapped in the system. 2. The reservoir could be overfilled or low on hydraulic fluid.	1. Open the release valve (4) . Pump the pump peddle (2) a couple of full strokes. Close the release. 2. Check the fluid level is correct. Do not overfill.
Ram will not fully extend	Low on hydraulic fluid.	1. Check that oil level is correct. 2. Check oil with ram fully retracted. 3. Add hydraulic fluid.
Fluid leaking from release valve	Worn O-ring.	1. Contact Kincrome customer Service
Fluid leaking around hydraulic ram piston	Worn seal or piston.	Please contact Kincrome customer service.

**Office Contact Details:****Phone:** 1300 657 528**Fax:** 1300 556 005**Email:** [enquiries@kincrome.com.au](mailto:enquiries@kincrome.com.au)**Website:** [www.kincrome.com.au](http://www.kincrome.com.au)

## Spare Parts List & Diagram



Part No.	Description	Qty.	Part No.	Description	Qty.
K12100-1	Ram Assembly	1	K12100-11	Lock Pin with Chain	1
K12100-2	Bolt M16*115	1	K12100-12	Screw M6*20	4
K12100-3	Flat Washer 16	1	K12100-13	Lock Washer 6	4
K12100-4	Nut M16	1	K12100-14	Flat Washer 6	4
K12100-5	Roller Raceway	4	K12100-15	Right Frame	1
K12100-6	Roller	2	K12100-16	Hook	1
K12100-7	Raceway Lock Screw	8	K12100-17	Washer for Hook	1
K12100-8	Lock Nut M12	4	K12100-18	Nut for Hook	1
K12100-9	4" Swivel Caster 1Pce (PU)	1	K12100-19	Seal Kit	1
K12100-9L	4" Locking Swivel Castor 1PCE (PU)	1	K12100-20	4" Swivel Caster 1Pce (NYL)	1
K12100-10	Left Frame	1	K12100-20L	4" Locking Swivel Castor 1PCE (NYL)	1

**PLEASE NOTE:** Part number K12100-9 & K12100-9L are for the Polyurethane Castors.

Part number K12100-20 & K12100-20L are for the Nylon Castors.

Refer to page 9, for Seal Kit Contents

**Seal Kit Contents**

Description	Qty.
O-Ring	1
Back-up Ring	1
Copper Washer	1
Cylinder Copper Washer	1
Copper Washer	1
Rectangle Seal Ring	1
Tank Washer	2
Y-Ring	1
Piston O-Ring	1
Bowl Seal Ring	1

**Notes:****WARRANTY****12**  
**MONTH**  
**WARRANTY**

Warranty given by Kincrome Australia Pty Ltd of 3 Lakeview Drive, Caribbean Park, Scoresby, Victoria (Tel 1300 657 528). The applicable warranty period (12 months) commences on the date that the product is purchased. If this product has materials or workmanship defects (other than defects caused by abnormal or non warranted use) you can, at your cost, send the product to place of purchase, an authorised Kincrome service agent or one of Kincromes addresses for repair or replacement. Your rights under this warranty are in addition to any other rights you have under the Australian Consumer Law or other applicable laws. Our goods come with guarantees that cannot be excluded under the Australian Consumer Law. You are entitled to a replacement or refund for a major failure and compensation for any other reasonably foreseeable loss or damage. You are also entitled to have the goods repaired or replaced if the goods fail to be of acceptable quality and the failure does not amount to a major failure. For further details please visit [www.kincrome.com.au](http://www.kincrome.com.au) or call us. Due to minor changes in design or manufacture, the product you purchase may sometimes differ from the one shown on the packaging.

**KINCROME**   
PROFESSIONAL QUALITY TOOLS

[www.kincrome.com.au](http://www.kincrome.com.au)